

PT Series

10KVA-80KVA

3 Phase In - 3 Phase Out



About the PT Series

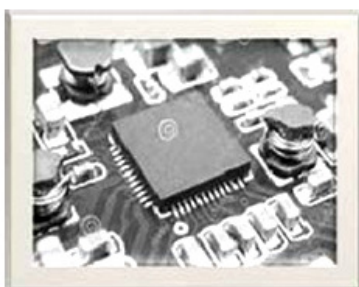
Perpetual Power presents the PT Series Online UPS-a high-performance, fully digital uninterruptible power supply featuring advanced DSP (Digital Signal Processing) control technology. The system utilizes an online double-conversion topology to ensure maximum power reliability. Its DC/AC conversion is based on SPWM (Sinusoidal Pulse Width Modulation) technology, utilizing high-efficiency IGBT power modules and an output isolation transformer for enhanced performance and protection.

Key Features - PT Series UPS

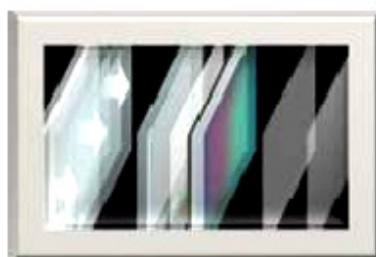
- Double Benchmark designed power System
- Reliability and safety Protection
- Superior Generator compatibility
- ABM Technology
- Strong load capacity and no switching time needed during the output.
- Power Supply Mode : 3-phase in/3-phase out
- Pluggable power module design with front access to decrease MTTR, parallel
- redundancy capability for power guarantee
- Parallel operation with common battery
- Power walk-in function
- Dual-mains inputs
- Built-in 4 switches including Mains input, bypass input, output and maintenance bypass switch
- Flexible battery configuration and adjustable charging current
- Output power factor 1
- Active power factor correction in all phases
- Built-in 7" touch LCD screen for comprehensive information
- Emergency power off function(EPO)
- 50Hz/60Hz frequency converter mode

Benchmark Design

The PT Series is engineered as a performance benchmark, designed to adapt seamlessly to any environment. It features an intuitive LCD/LED display, multifunctional key operation, and a user-friendly HMI interface. Advanced multi-platform communication capabilities are integrated, along with strategically placed air vents on the front and side panels for optimal cooling and ventilation.



Complete system
superior by
Microcontroller



Display LCD+LED



HMI- Technology



Smart Air Vent UPS

Tremendous Benefits

There are numerous advantages to deploying a Perpetual Power UPS. First and foremost, it protects against utility power failures and helps safeguard sensitive equipment-such as computers and network devices-from damage caused by power disturbances, which are increasingly common. The PT Series offers a cost-effective, high-quality solution, combining reliability with exceptional value.

7" touch LCD screen

- Dynamic password optimizes service performance
- Adjustable charging current via LCD

Parallel operation up to 4 units with common battery

Pluggable power module for Maintenance by pass switch effortless maintenance



Front View



100K/120K Front Door Open View



180K/200K Front Door Open View

Front access design for terminal wiring

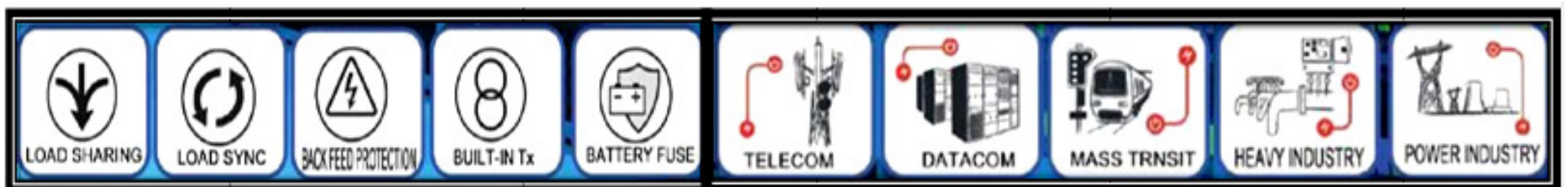
Mains input switch/bypass switch/
Output switch

Pluggable power module for effortless maintenance

Standard configure with Output Isolation Transformer: Optional



Applications



Technical Specifications

| MODEL | | PT33 10 ITE | PT33 15 ITE | PT33 20 ITE | PT33 30 ITE | PT33 40 ITE | PT33 60 ITE | PT33 80 ITE |
|--------------------------------------|-------------------------|--|--------------------------------------|-------------|------------------------|---------------------|---------------------|---------------------|
| PHASE | | 3-phase in / 3-phase out | | | | | | |
| CAPACITY | | 10 KVA | 15 KVA | 20 KVA | 30 KVA | 40 KVA | 60 KVA | 80 KVA |
| PARALLEL CAPABILITY | | Up to 6 units in parallel | | | | | | |
| INPUT | | | | | | | | |
| Nominal Voltage | | 380 / 400 / 415 VAC (3Ph+N) | | | | | | |
| Voltage Range | | -30% - +20% | | | | | | |
| Frequency Range | | 40Hz -70Hz | | | | | | |
| Power Factor | | ≥ 0.99 @ 100% Load | | | | | | |
| Harmonic Distortion (THDi) | | <3% (Non-Linear Load) | | | | | | |
| OUTPUT | | | | | | | | |
| Output Voltage | | 360 / 380 / 400 / 415 VAC (3Ph+N) | | | | | | |
| AC Voltage Regulation | | ± 1% | | | | | | |
| Frequency Range (Synchronized Range) | | 46Hz - 54Hz or 56Hz - 64Hz | | | | | | |
| Frequency Range (Online Mode) | | 50Hz - 60Hz ± 1% | | | | | | |
| Current Crest Ratio | | 3:1(max.) | | | | | | |
| Harmonic Distortion | | ≤ 1% THD (Linear Load) ≤ 3% THD (Non-Linear Load) | | | | | | |
| Transfer Time | AC Mode to Batt.Mode | Zero | | | | | | |
| | Inverter to Bypass | Zero | | | | | | |
| Wave form | | Pure Sine wave | | | | | | |
| Overload Capability | | 100-110% for 30 Mins, 111-125% for 10 Mins,126% - 150% for 1 Min > 150% or 400ms | | | | | | |
| BYPASS | | | | | | | | |
| Nominal Voltage | | 380 / 400 / 415 VAC (3Ph + N) | | | | | | |
| Voltage Range | | -30% - +20% (Adjustable) | | | | | | |
| Frequency Range (Synchronized Range) | | 46Hz - 54Hz or 56Hz - 64Hz | | | | | | |
| Overload Capability | | >130% 1 Minute (Default) Continuously Working Until Breaker Protection (Optional) | | | | | | |
| EFFICIENCY | | | | | | | | |
| AC Mode | | 96.00% | | | | | | |
| ECO Mode | | 99.00% | | | | | | |
| Battery Mode | | 96.00% | | | | | | |
| BATTERY | | | | | | | | |
| Standard Model | Battery Type | 12V / 9Ah | 12V / 9Ah | 12V / 9Ah | 12V / 7Ah | 12V / 9Ah | N/A | |
| | Numbers | (10+10) Pcs | (16+16) Pcs | (16+16) Pcs | (16+16)Pcs x 2 strings | | | |
| | Typical Recharge Time | 9 hours recover to 90% capacity | | | | | | |
| | Charging Current (Max.) | 1A | | | | 2A | | |
| | Charging Voltage | +/-136.5 VDC ± 10% | +/-218 VDC ± 10% | | | | | |
| Long-run Model | Battery Type | Depending on the applications | | | | | | |
| | Numbers | +/-10 Pcs | +/- 16 Pcs - +/- 20 Pcs (Adjustable) | | | | | |
| | Charging Current (max.) | 1A-12A (Adjustable) | | | | 1A-16A (Adjustable) | 2A-24A (Adjustable) | 2A-32A (Adjustable) |
| | Charging Voltage | +/-136.5VDC ± 10% | +/-13.65V x N (N = 16 - 20) | | | | | |
| INDICATORS | | | | | | | | |
| LCD Panel | | UPS status, Load level, Battery level, Input / Output voltage, Discharge timer, and Fault conditions | | | | | | |
| QUALITY / SECURITY | | | | | | | | |
| Quality/Security | | ISO9001:2015, ISO14001:2015, ISO 27001:2013, ISO45001:2018, ROHS | | | | | | |
| ENVIRONMENT | | | | | | | | |
| Operation Temperature | | 0-45°C | | | | | | |
| Operation Humidity | | < 95% and Non-Condensing | | | | | | |
| Altitude | | 0-1500m at Full Load | | | | | | |
| Noise Level | | Less than 50 dB @ 1 Meter | | | | | | |
| MANAGEMENT CONTROL & COMMUNICATION | | | | | | | | |
| Smart RS-232/USB | | Supports Windows 2000 / 2003 / XP / Vista / 2008 , Windows 7 / 8 / 10, Linux and MAC | | | | | | |
| Optional SNMP | | Power Management From SNMP Manager and Web Browser | | | | | | |
| PHYSICAL | | | | | | | | |
| Standard Model | Dimension DxWxH (mm) | 630 x 250 x 826 | | | 815 x 300 x 1000 | | N/A | |
| | Net Weight (Kgs) | 124 | 139 | | 225 | 250 | | |
| Long-run Model | Dimension DxWxH (mm) | 630 x 250 x 826 | | | 815 x 300 x 1000 | | 790 x 360 x 1010 | |
| | Net Weight (Kgs) | 28 | 43 | | 60 | 67 | 108 | 113 |

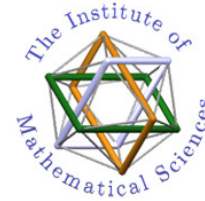
****Accuracy weight ± 200gm**

****Accuracy Dimension ± 20mm**

- Specifications are subject to change without notice.
- Due to regular upgrade on picture and actual product may vary

- Custom-made specifications are acceptable.

Our Clients





AIIMS
New Delhi



An ISO 9001:2015 PORT



3M Science. Applied to Life.™



Contact Info

Head Office: #121/6, Sathnur Main Road, Near Country Club, Sathnur,
Bangalore - 560064

Registered Office: #40/102, L.G.F, C.R.Park, New Delhi - 110019

Email: ajeet@perpetualpowerups.com

Phone: +91 984 5271 112 Toll Free No: 1800 569 1663